

Community Health Workers in Missouri

Community health workers (CHWs) are frontline public health workers who are trusted members of and/or have a personally informed understanding of the communities they serve. They serve as a link between health and social services and their communities.

CHWs work across several sectors and at a variety of organizations, including but not limited to community-based organizations, health centers, hospitals, local public health agencies or health departments, pharmacies, and schools.

Many specialize in working with specific populations, such as: people in recovery from addiction, those managing a chronic disease, gun violence survivors, people with justice system involvement, or children in the foster care system.



1,800+ CHWs were working in Missouri in 2022.

The CHW workforce in Missouri is expected to grow **9%** by 2030.

There are currently **15** state-certified curriculum providers, several of which are community or technical colleges.

What challenges do they face?

Inconsistent job responsibilities. In some ways this can be a strength, but this variability can create confusion on when and how CHWs are incorporated.

Inadequate pay, lack of career advancement, and burnout. These factors are all holding back the role and increasing turnover.

Lack of sustainable funding. This limits employers' ability to fully integrate CHWs into their organizational strategies.



Recommendations

Provide additional infrastructure support and funding to the workforce to promote long-term employment.

Employers should implement the CHW role into their overall strategies instead of making them ad hoc resources.

The field must promote increased understanding of the roles that CHWs play and their importance.

Interested in learning more?

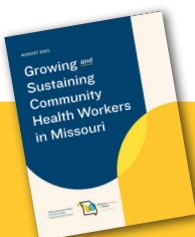
Visit the [Community Health Workers Association of Missouri](#).

Milken Institute School of Public Health

THE GEORGE WASHINGTON UNIVERSITY



Missouri Foundation for Health



Read our full report, [Growing and Sustaining Community Health Workers in Missouri](#).